



The Public Utilities
Commission of Ohio

A report by the Staff of the
Public Utilities Commission of Ohio

Ohio Energy Data Report

Third Quarter 2008



This page was intentionally left blank.

TABLE OF CONTENTS

| | |
|----------------|---|
| TABLES: | 3rd QUARTER |
| 1 | Quarterly Peak Loads of Investor-Owned Electric Utility Service Areas in Ohio |
| 2 | Electricity Consumption in Investor-Owned Electric Utility Service Areas in Ohio |
| 3 | Residential Sector: Average Price of Electricity Paid by the Full Service Customers of EDUs in Ohio |
| 4 | Ohio Natural Gas Consumption by Sector |
| 5 | Residential Sector: Average Price of Tariff Natural Gas Sales |
| 6 | Ohio Distillate Deliveries |
| 7 | Residential Price of No.2 Fuel Oil in Ohio and the U.S. |
| 8 | Coal Consumption in Ohio by End-Use Sector |
| 9 | Production of Coal in Ohio |

| | |
|-----------------|--|
| FIGURES: | 3rd QUARTER |
| 1 | Quarterly Peak Loads of Investor-Owned Electric Utility Service Areas in Ohio |
| 2 | Electricity Consumption in Investor-Owned Electric Utility Service Areas in Ohio |
| 3 | Ohio Natural Gas Consumption by Sector |
| 4 | Residential Sector: Average Price of Tariff Natural Gas Sales |
| 5 | Residential Price of No.2 Fuel Oil in Ohio |
| 6 | Coal Consumption in Ohio by End-Use Sector |

This page was intentionally left blank.

Introduction

Ohio Energy Data Report is published quarterly by the Public Utilities Commission of Ohio (PUCO) to provide readers with current statistics and information about the production, consumption, and price of energy in Ohio. The publication encompasses data from four energy sectors, two that are regulated by the PUCO (electricity and natural gas) and two that are not (petroleum and coal).

The publication date of this edition of *Ohio Energy Data Report* is approximately four months after the calendar quarter for which the information is reported. The sources of the data presented in this report are presented in Appendices A and B of the report.

To receive future editions of this publication, please subscribe the Ohio Energy Data Report list service. To subscribe to the list service, send an e-mail message to listserv@lists.puc.state.oh.us with a blank subject line. In the body of the message, type the following message:

subscribe ohioenergydata *yourfirstname yourlastname*

This page was intentionally left blank.

ELECTRICITY

This page was intentionally left blank.

TABLE 1.
Quarterly Peak Loads of Investor-Owned Electric Utility Service Areas in Ohio
3rd Quarter 2008
(MW)

| | Cleveland Electric Illuminating Co. | | | | Columbus Southern Power Co. | | | | Dayton Power & Light Co. | | | |
|-------------|-------------------------------------|----------|-------|----------|-----------------------------|----------|-------|----------|--------------------------|----------|-------|----------|
| | 2008 | | 2007 | | 2008 | | 2007 | | 2008 | | 2007 | |
| | MW | DATE | MW | DATE | MW | DATE | MW | DATE | MW | DATE | MW | DATE |
| 1st Quarter | 3,423 | 02/11/08 | 3,285 | 02/05/07 | 3,647 | 01/25/08 | 3,694 | 02/05/07 | 2,623 | 01/02/08 | 2,681 | 02/06/07 |
| 2nd Quarter | 3,982 | 06/09/08 | 3,962 | 06/27/07 | 4,303 | 06/09/08 | 4,333 | 06/18/07 | 2,902 | 06/09/08 | 2,947 | 06/18/07 |
| 3rd Quarter | 3,942 | 07/17/08 | 4,155 | 08/24/07 | 4,301 | 09/03/08 | 4,723 | 08/08/07 | 3,027 | 09/03/08 | 3,270 | 08/08/07 |
| 4th Quarter | | | 3,577 | 10/8/07 | | | 3,955 | 10/8/07 | | | 2,731 | 10/08/07 |

| | Duke Energy Ohio | | | | Ohio Edison Co. | | | | Ohio Power Co. | | | |
|-------------|------------------|----------|-------|----------|-----------------|----------|-------|----------|----------------|----------|-------|----------|
| | 2008 | | 2007 | | 2008 | | 2007 | | 2008 | | 2007 | |
| | MW | DATE | MW | DATE | MW | DATE | MW | DATE | MW | DATE | MW | DATE |
| 1st Quarter | 3,639 | 01/25/08 | 3,710 | 02/06/07 | 4,591 | 02/19/08 | 4,409 | 02/05/07 | 4,950 | 02/12/08 | 4,683 | 02/06/07 |
| 2nd Quarter | 4,135 | 06/09/08 | 4,147 | 06/26/07 | 4,997 | 06/09/08 | 4,961 | 06/26/07 | 5,122 | 06/09/08 | 4,925 | 06/26/07 |
| 3rd Quarter | 4,339 | 09/03/08 | 4,630 | 08/23/07 | 4,932 | 07/17/08 | 5,345 | 08/08/07 | 5,074 | 08/06/08 | 5,167 | 08/23/07 |
| 4th Quarter | | | 3,985 | 10/8/07 | | | 4,458 | 10/08/07 | | | 4,541 | 12/17/07 |

| | Toledo Edison Co. | | | |
|-------------|-------------------|----------|-------|----------|
| | 2008 | | 2007 | |
| | MW | DATE | MW | DATE |
| 1st Quarter | 1,765 | 02/11/08 | 1,672 | 02/06/07 |
| 2nd Quarter | 1,899 | 06/09/08 | 1,980 | 06/26/07 |
| 3rd Quarter | 1,844 | 09/03/08 | 2,002 | 08/02/07 |
| 4th Quarter | | | 1,745 | 10/08/07 |

Source: PUCO Form SE-1.

Figure 1.
Quarterly Peak Loads of Investor-Owned Electric Utility Service Areas in Ohio
3rd Quarter 2008 and 3rd Quarter 2007

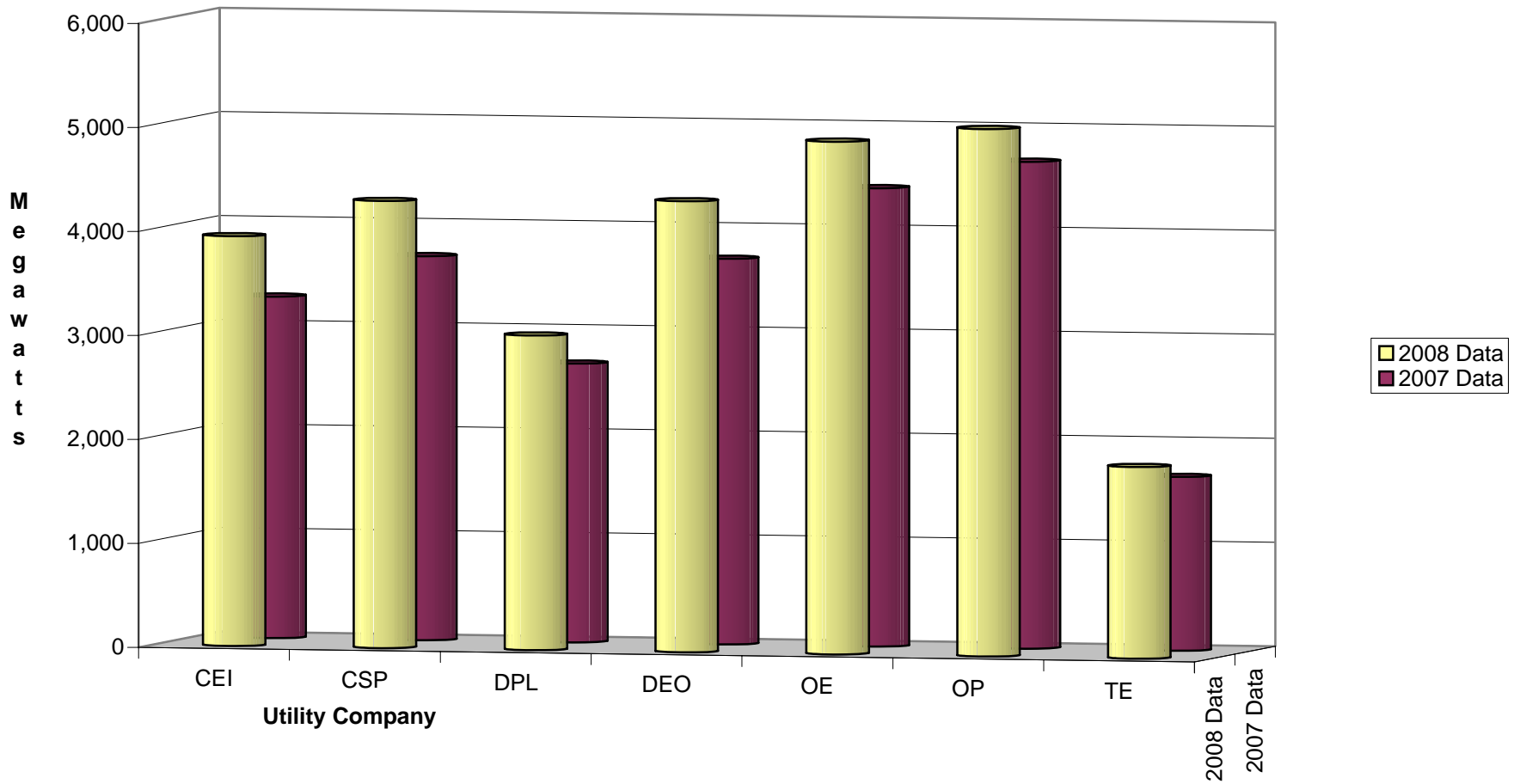


TABLE 2.
Electricity Consumption in Investor-Owned Electric Utility Service Areas in Ohio
3rd Quarter 2008
(MILLION MWH)

| | RESIDENTIAL | | | | | | COMMERCIAL | | | | | | INDUSTRIAL | | | | | | GRAND TOTAL** | | | | | |
|---|-------------|------|--------|------|--------|------|------------|------|--------|------|--------|------|------------|------|--------|------|--------|------|---------------|------|--------|------|--------|-------|
| | EDU | | CRES | | TOTAL | | EDU | | CRES | | TOTAL | | EDU | | CRES | | TOTAL | | EDU | | CRES | | TOTAL | |
| | 2008 | 2007 | 2008 | 2007 | 2008 | 2007 | 2008 | 2007 | 2008 | 2007 | 2008 | 2007 | 2008 | 2007 | 2008 | 2007 | 2008 | 2007 | 2008 | 2007 | 2008 | 2007 | 2008 | 2007 |
| 1st Quarter | 12.7 | 12.4 | 0.6 | 0.6 | 13.3 | 13.0 | 9.0 | 8.8 | 1.1 | 1.1 | 10.1 | 9.9 | 11.9 | 11.2 | 1.3 | 1.3 | 13.1 | 12.5 | 34.4 | 33.2 | 3.0 | 3.1 | 37.4 | 36.2 |
| 2nd Quarter | 8.9 | 9.5 | 0.5 | 0.5 | 9.4 | 10.0 | 8.5 | 8.7 | 1.0 | 1.1 | 9.5 | 9.9 | 12.0 | 12.0 | 1.3 | 1.3 | 13.3 | 13.3 | 30.2 | 30.9 | 3.0 | 3.1 | 33.1 | 34.1 |
| 3rd Quarter | 11.2 | 11.9 | 0.6 | 0.7 | 11.9 | 12.5 | 9.7 | 9.9 | 1.2 | 1.2 | 10.9 | 11.1 | 12.2 | 12.4 | 1.3 | 1.4 | 13.5 | 13.9 | 34.0 | 35.0 | 3.3 | 3.5 | 37.2 | 38.5 |
| 4th Quarter | | 10.1 | | 0.5 | | 10.7 | | 8.6 | | 1.1 | | 9.7 | | 11.8 | | 1.3 | | 13.2 | | 31.4 | | 3.1 | | 34.5 |
| Total Year Through 3rd Quarter | 32.9 | 33.7 | 1.7 | 1.8 | 34.6 | 35.5 | 27.2 | 27.4 | 3.3 | 3.5 | 30.5 | 30.8 | 36.1 | 35.6 | 3.8 | 4.0 | 39.9 | 39.7 | 98.5 | 99.1 | 9.2 | 9.7 | 107.7 | 108.8 |
| Percent Change 3rd Quarter | -5.34% | | -6.79% | | -5.42% | | -1.48% | | -6.02% | | -1.98% | | -2.00% | | -8.14% | | -2.63% | | -2.94% | | -6.75% | | -3.28% | |
| Percent Change Year Through 3rd Quarter | -2.47% | | -4.78% | | -2.58% | | -0.71% | | -5.01% | | -1.19% | | 1.23% | | -5.16% | | 0.58% | | -0.59% | | -4.81% | | -0.97% | |

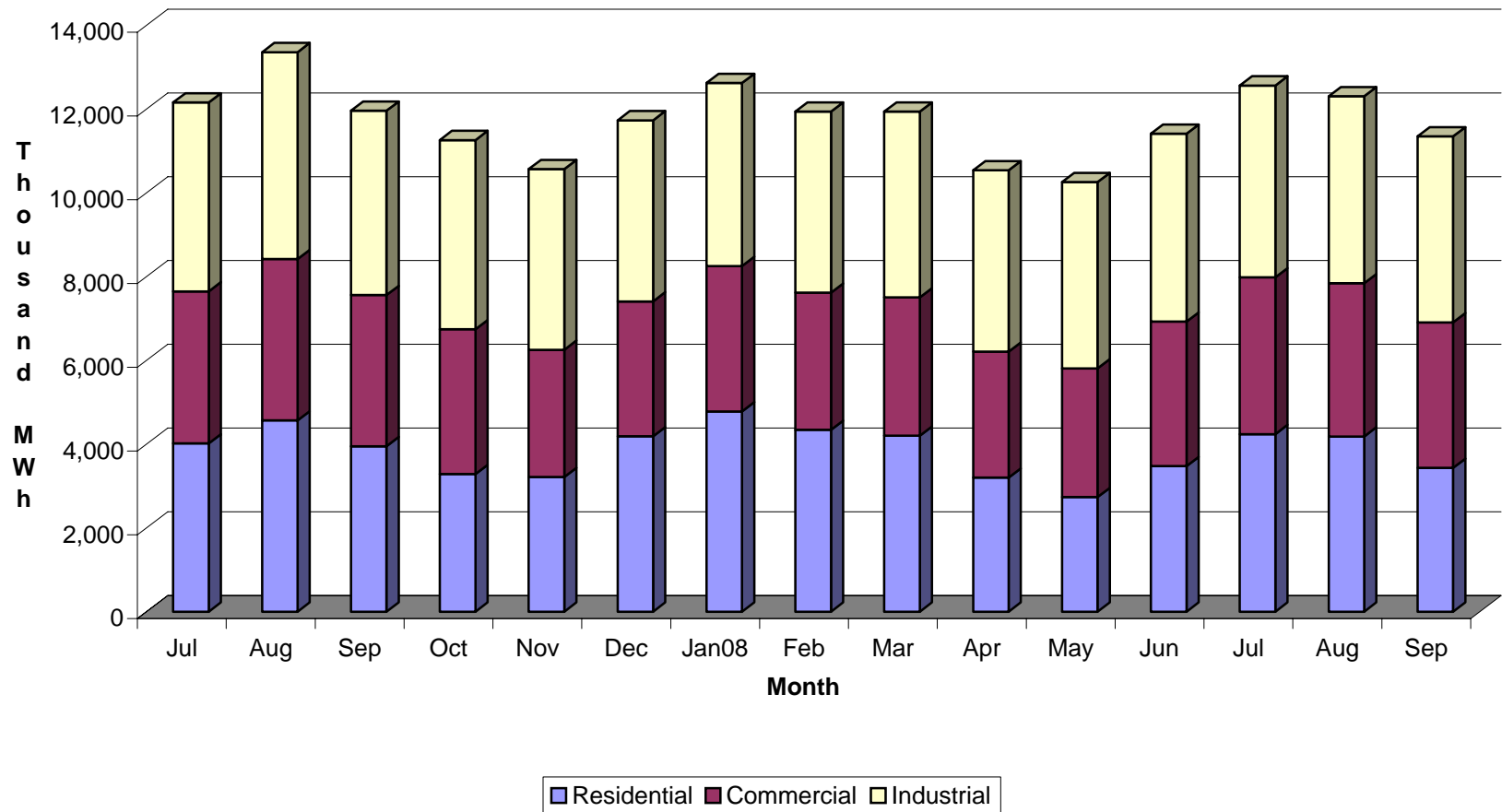
NOTES:

1. EDU = Electricity sold to jurisdictional customers under PUCO approved tariffs by Ohio electric distribution utilities.
2. CRES = Electricity sold to jurisdictional EDU service area customers by "competitive retail electricity service providers".

**Includes other sales.

Source: PUCO Form SE-1.

Figure 2.
Electricity Consumption in Investor-Owned Electric Utility Service Areas in Ohio
July 2007 - September 2008



Source: PUCO Form SE-1.

TABLE 3.
Residential Sector
Average Price of Electricity Paid by the Full Service Customers of EDUs in Ohio
3rd Quarter 2008
(CENTS PER KWH)

| | Cleveland Electric III | | Columbus Southern Power | | Dayton Power & Light | | Duke Energy Ohio* | |
|---|------------------------|------|-------------------------|------|----------------------|------|-------------------|------|
| | 2008 | 2007 | 2008 | 2007 | 2008 | 2007 | 2008 | 2007 |
| 1st Quarter | 9.8 | 9.3 | 8.4 | 7.8 | 9.3 | 9.1 | 9.2 | 8.7 |
| 2nd Quarter | 11.9 | 11.2 | 9.9 | 9.3 | 10.2 | 9.9 | 11.3 | 10.4 |
| 3rd Quarter | 13.3 | 12.6 | 10.7 | 9.8 | 10.2 | 9.9 | 11.4 | 12.0 |
| 4th Quarter | | 10.0 | | 8.5 | | 9.8 | | 9.4 |
| Average Year Through 3rd Quarter | 11.6 | 11.0 | 9.6 | 8.9 | 9.6 | 9.6 | 10.6 | 10.4 |
| Percent Change 3rd Quarter | 5.02% | | 9.29% | | 3.22% | | -5.04% | |
| Percent Change Year Through 3rd Quarter | 4.98% | | 7.49% | | 0.95% | | 1.49% | |

| | Ohio Edison Company | | Ohio Power Company | | Toledo Edison Company | |
|---|---------------------|------|--------------------|------|-----------------------|------|
| | 2008 | 2007 | 2008 | 2007 | 2008 | 2007 |
| 1st Quarter | 10.1 | 9.6 | 7.7 | 7.6 | 10.7 | 10.0 |
| 2nd Quarter | 11.5 | 10.9 | 8.2 | 7.9 | 12.0 | 11.2 |
| 3rd Quarter | 12.1 | 11.4 | 8.1 | 7.7 | 12.9 | 12.2 |
| 4th Quarter | | 10.3 | | 7.7 | | 10.8 |
| Average Year Through 3rd Quarter | 11.2 | 10.6 | 8.0 | 7.7 | 11.8 | 11.1 |
| Percent Change 3rd Quarter | 6.04% | | 4.91% | | 5.72% | |
| Percent Change Year Through 3rd Quarter | 5.74% | | 3.20% | | 6.45% | |

NOTES:

1. Full service customers are defined as those customers who receive generation service from their local EDU.
2. Quarterly Average Prices are defined as quarterly revenues from full service customers / quarterly sales to full service customers.
3. In Dec 31, 2005 Monongahela Power (MP) was purchased by AEP. Starting in 2006, MP data are included in Columbus Southern Power Company statistics.

Source: PUCO Form SE-1.

This page was intentionally left blank.

NATURAL GAS

This page was intentionally left blank.

TABLE 4.
Ohio Natural Gas Consumption by Sector
3rd Quarter 2008
(BILLION CUBIC FEET)

| | RESIDENTIAL | | | | | | COMMERCIAL | | | | | | INDUSTRIAL | | | | | | GRAND TOTAL** | | | | | |
|---|-------------|-------|----------------|-------|---------|-------|------------|------|----------------|------|-------|-------|------------|------|----------------|-------|-------|-------|---------------|-------|----------------|-------|--------|-------|
| | Tariff | | Transportation | | Total | | Tariff | | Transportation | | Total | | Tariff | | Transportation | | Total | | Tariff | | Transportation | | Total | |
| | 2008 | 2007 | 2008 | 2007 | 2008 | 2007 | 2008 | 2007 | 2008 | 2007 | 2008 | 2007 | 2008 | 2007 | 2008 | 2007 | 2008 | 2007 | 2008 | 2007 | 2008 | 2007 | 2008 | 2007 |
| 1st Quarter | 75.9 | 75.1 | 72.5 | 71.2 | 148.4 | 146.3 | 24.5 | 24.1 | 50.7 | 48.0 | 75.2 | 72.1 | 1.8 | 1.9 | 67.9 | 64.4 | 69.7 | 66.3 | 102.2 | 101.1 | 191.1 | 183.7 | 293.3 | 284.8 |
| 2nd Quarter | 18.4 | 21.9 | 19.6 | 21.9 | 38.0 | 43.9 | 5.6 | 7.0 | 17.4 | 18.5 | 23.0 | 25.5 | 0.6 | 0.6 | 49.4 | 46.6 | 50.0 | 47.2 | 24.6 | 29.6 | 86.5 | 87.0 | 111.1 | 116.6 |
| 3rd Quarter | 7.8 | 8.2 | 5.2 | 8.1 | 13.1 | 16.3 | 2.8 | 3.0 | 9.4 | 9.2 | 12.2 | 12.2 | 0.4 | 0.3 | 44.2 | 41.9 | 44.6 | 42.3 | 11.0 | 11.6 | 58.9 | 59.2 | 69.9 | 70.8 |
| 4th Quarter | | 43.6 | | 40.0 | | 83.7 | | 13.2 | | 28.3 | | 41.5 | | 1.0 | | 54.7 | | 55.6 | | 57.9 | | 123.0 | | 180.9 |
| Total Year Through 3rd Quarter | 102.2 | 105.2 | 97.3 | 101.3 | 199.5 | 206.5 | 32.8 | 34.1 | 77.5 | 75.7 | 110.4 | 109.8 | 2.7 | 2.9 | 161.6 | 153.0 | 164.3 | 155.8 | 137.9 | 142.3 | 336.4 | 329.9 | 474.3 | 472.2 |
| Percent Change 3rd Quarter | -4.41% | | -35.55% | | -19.90% | | -5.35% | | 2.01% | | 0.21% | | 3.23% | | 5.54% | | 5.53% | | -4.54% | | -0.63% | | -1.27% | |
| Percent Change Year Through 3rd Quarter | -2.83% | | -3.90% | | -3.36% | | -3.56% | | 2.43% | | 0.57% | | -5.22% | | 5.63% | | 5.43% | | -3.06% | | 1.97% | | 0.45% | |

NOTES:

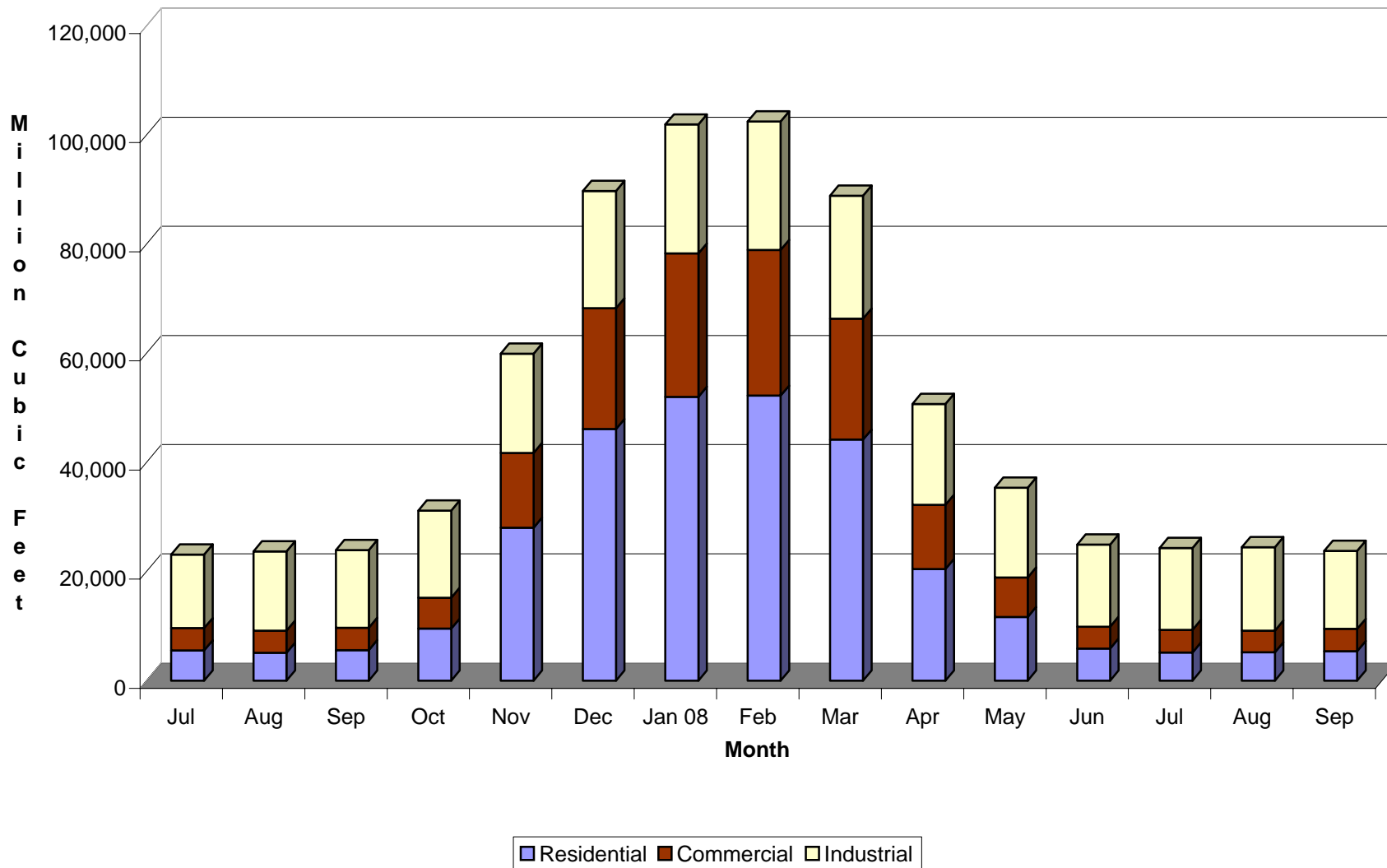
1. Tariff = Natural Gas sold to jurisdictional customers under PUCO approved tariffs by Ohio natural gas utilities.

2. Transportation = Natural Gas transported to jurisdictional customers by Ohio natural gas utilities.

** Includes gas used for electricity generation.

Source: PUCO Form SG-1.

Figure 3.
Ohio Natural Gas Consumption by Sector
July 2007 - September 2008



Source: PUCO Form SG-1.

TABLE 5.
Residential Sector
Average Price of Tariff Natural Gas Sales
3rd Quarter 2008
(DOLLARS PER MCF)

| | Columbia Gas (Columbus) | | Dominion East Ohio* (Cleveland) | | Duke Energy Ohio** (Cincinnati) | | Vectren (Dayton) | |
|--|----------------------------|-------|------------------------------------|-------|------------------------------------|-------|---------------------|-------|
| | 2008 | 2007 | 2008 | 2007 | 2008 | 2007 | 2008 | 2007 |
| 1st Quarter | 13.99 | 13.10 | 13.06 | 11.24 | 13.36 | 12.66 | 12.20 | 11.32 |
| 2nd Quarter | 17.89 | 13.51 | 16.36 | 12.96 | 18.97 | 15.58 | 18.10 | 13.03 |
| 3rd Quarter | 19.80 | 16.33 | 18.60 | 13.79 | 29.35 | 20.43 | 20.56 | 18.98 |
| 4th Quarter | | 13.69 | | 12.47 | | 13.43 | | 12.64 |
| Average Year Through 3rd Quarter | 15.14 | 13.46 | 14.15 | 11.83 | 15.57 | 13.75 | 13.70 | 12.14 |
| Percent Change 3rd Quarter | 21.26% | | 34.94% | | 43.66% | | 8.32% | |
| Percent Change Year Through 3rd Quarter | 12.47% | | 19.64% | | 13.27% | | 12.84% | |

NOTE:

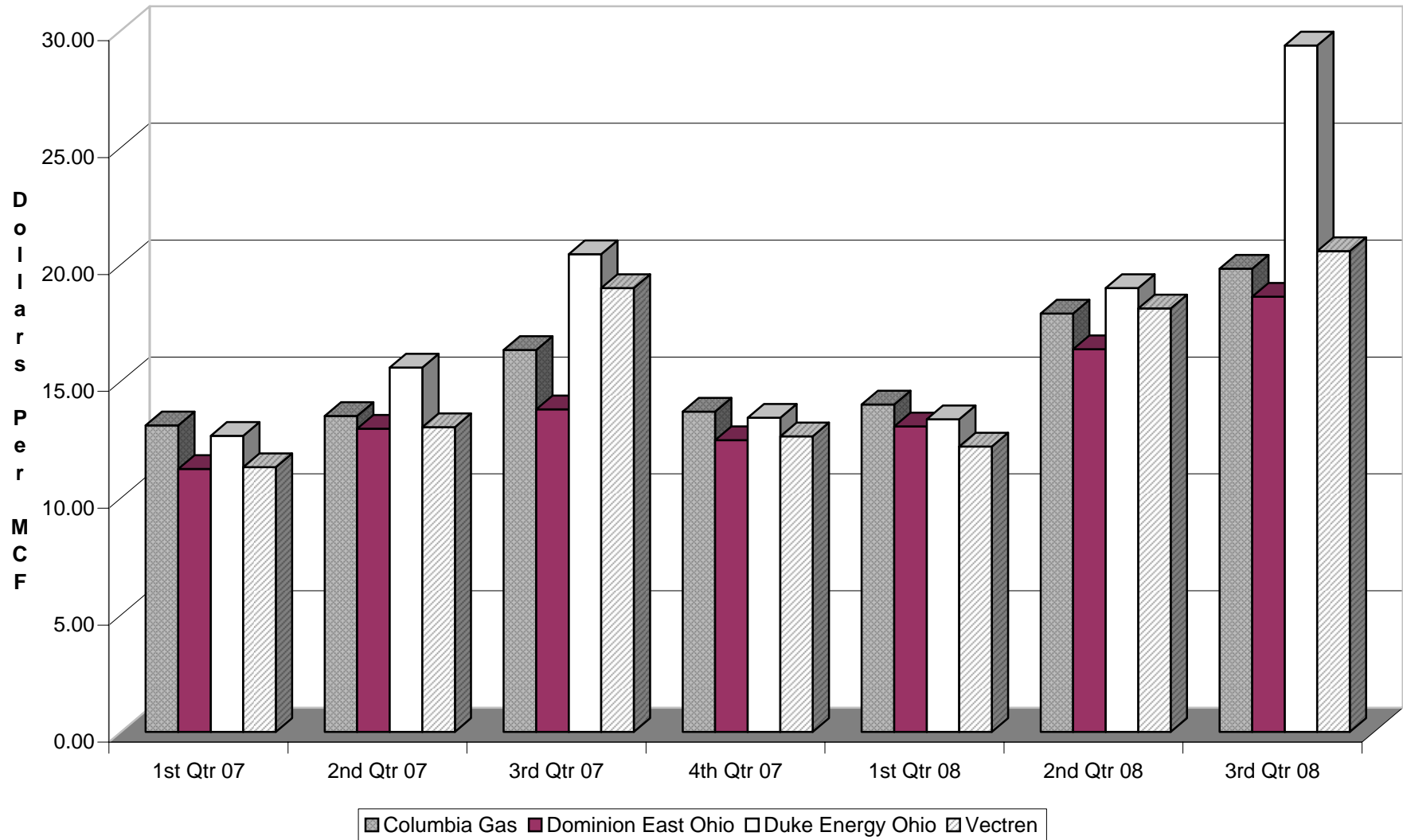
1. Quarterly Average Prices are defined as quarterly tariff revenues / quarterly tariff sales.

* Formally known as East Ohio Gas.

** Formally known as The Cincinnati Gas and Electric Company.

Source: PUCO Form SG-1.

Figure 4.
Residential Sector: Average Price of Tariff Natural Gas Sales



PETROLEUM PRODUCTS

This page was intentionally left blank.

TABLE 6.
Ohio Distillate Deliveries
3rd Quarter 2008
(MILLION GALLONS)

| | Motor Gasoline | | Kerosene and No. 1 Distillates | | Diesel Fuel Oil & No. 2 Fuel Oil | | Propane | | Jet Fuel | | Residual Fuel Oil | |
|---|----------------|----------|--------------------------------|-------|----------------------------------|--------|---------|-------|----------|--------|-------------------|-------|
| | 2008 | 2007 | 2008 | 2007 | 2008 | 2007 | 2008 | 2007 | 2008 | 2007 | 2008 | 2007 |
| 1st Quarter | 975.48 | 1,061.93 | 7.77 | 7.74 | 291.61 | 254.58 | 24.62 | 19.07 | 123.93 | 125.33 | 4.09 | 5.17 |
| 2nd Quarter | 1,043.38 | 1,090.72 | 1.02 | 1.15 | 297.84 | 282.53 | 9.98 | 8.83 | 133.89 | 130.12 | 10.10 | 6.71 |
| 3rd Quarter | 1,044.30 | 1,110.27 | 1.83 | 1.18 | 316.74 | 270.22 | 13.53 | 8.14 | 127.50 | 137.99 | 11.97 | 13.89 |
| 4th Quarter | | 1,067.59 | | 4.90 | | 278.38 | | 14.16 | | 125.68 | | 17.22 |
| Total Year Through 3rd Quarter | 3,063.16 | 3,262.92 | 10.62 | 10.07 | 906.19 | 807.33 | 48.13 | 36.04 | 385.32 | 393.44 | 26.16 | 25.77 |
| Percent Change 3rd Quarter | -5.94% | | 55.08% | | 17.22% | | 66.22% | | -7.60% | | -13.82% | |
| Percent Change Year Through 3rd Quarter | -6.12% | | 5.46% | | 12.25% | | 33.55% | | -2.06% | | 1.51% | |

NOTES:

1. MOTOR GASOLINE includes regular, midgrade and premium gasoline.
2. JET FUEL includes Kerosene-type jet fuel and Naphtha-type jet fuel.

Source: USDOE Form EIA-782C.

TABLE 7.
Residential Price of No. 2 Fuel Oil in Ohio and the U.S.
3rd Quarter 2008
(CENTS PER GALLON)

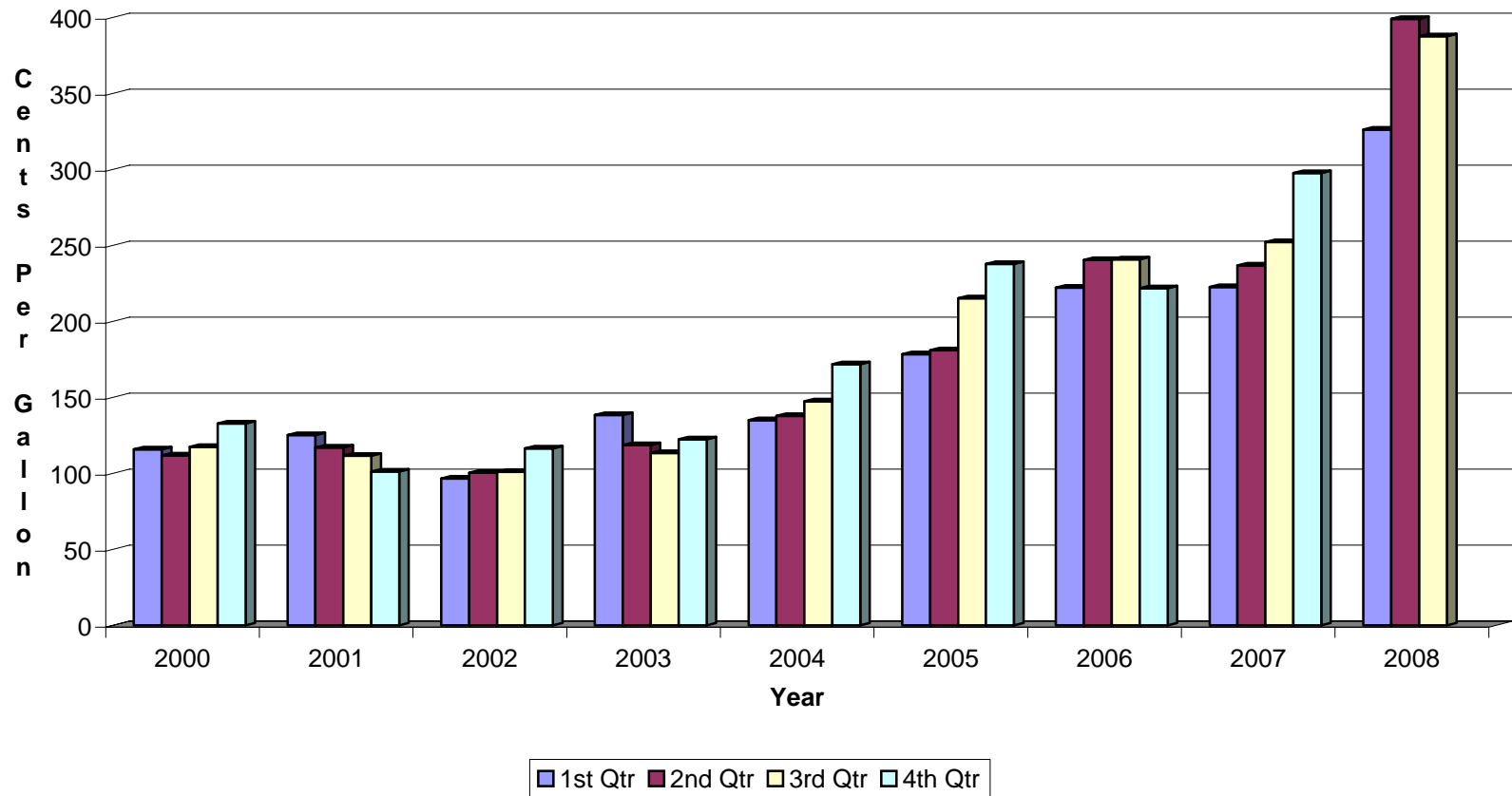
| | OHIO | | UNITED STATES | |
|--|--------|--------|---------------|--------|
| | 2008 | 2007 | 2008 | 2007 |
| 1st Quarter | 326.20 | 222.50 | 326.30 | 237.90 |
| 2nd Quarter | 399.00 | 236.80 | 391.50 | 248.50 |
| 3rd Quarter | 387.60 | 252.20 | 394.10 | 255.20 |
| 4th Quarter | | 297.50 | | 296.50 |
| Average Year Through 3rd Quarter | 370.93 | 237.17 | 370.63 | 247.20 |
| Percent Change 3rd Quarter | 53.69% | | 54.43% | |
| Percent Change Year Through 3rd Quarter | 56.40% | | 49.93% | |

NOTE:

1. The Average Year Through 3rd Quarter is approximated by taking the sum of the averages divided by the number of quarters.

Source: USDOE Petroleum Marketing Monthly.

**Figure 5.
Residential Price of No. 2 Fuel Oil in Ohio
1st Quarter 2000 - 3rd Quarter 2008**



Source: USDOE [Petroleum Marketing Monthly](#).

This page was intentionally left blank.

COAL

This page was intentionally left blank.

TABLE 8.
Coal Consumption in Ohio by End-Use Sector
3rd Quarter 2008
(MILLION SHORT TONS)

| | Electricity Generation | | | | | | Other | | Grand Total | |
|---|------------------------|-------|-----------------------------|-------|--------|-------|-------|------|-------------|-------|
| | Electric Utilities | | Independent Power Producers | | Total | | | | | |
| | 2008 | 2007 | 2008 | 2007 | 2008 | 2007 | 2008 | 2007 | 2008 | 2007 |
| 1st Quarter | 11.09 | 12.70 | 4.40 | 1.59 | 15.49 | 14.29 | 0.52 | 0.53 | 16.01 | 14.82 |
| 2nd Quarter | 9.92 | 9.40 | 4.12 | 4.35 | 14.04 | 13.75 | 0.45 | 0.45 | 14.49 | 14.20 |
| 3rd Quarter | 10.59 | 11.60 | 4.35 | 4.66 | 14.94 | 16.26 | 0.45 | 0.43 | 15.39 | 16.69 |
| 4th Quarter | | 10.74 | | 4.43 | | 15.17 | | 0.47 | | 15.64 |
| Total Year Through 3rd Quarter | 31.60 | 33.70 | 12.87 | 10.60 | 44.47 | 44.30 | 1.42 | 1.41 | 45.89 | 45.71 |
| Percent Change 3rd Quarter | -8.71% | | -6.65% | | -8.12% | | 4.65% | | -7.79% | |
| Percent Change Year Through 3rd Quarter | -6.23% | | 21.46% | | 0.39% | | 0.71% | | 0.40% | |

NOTES:

1. Quarterly coal information from USDOE is generally available four to six months after the end of a quarter. In order to provide more timely information on other fuels, coal information is presented with a lag of one quarter.
2. Totals do not include "coal carbonized at coke plants". Starting in 2002, EIA withheld current year state level "coke carbonized at coke plants" data to avoid disclosing individual company information. In 2001, "coal carbonized at coke plants" in Ohio was 1.6 million short tons.

Source: EIA Quarterly Coal Reports & Electric Power Monthly.

Figure 6.
Coal Consumption in Ohio by End-Use Sector
3rd Quarter 2007- 3rd Quarter 2008

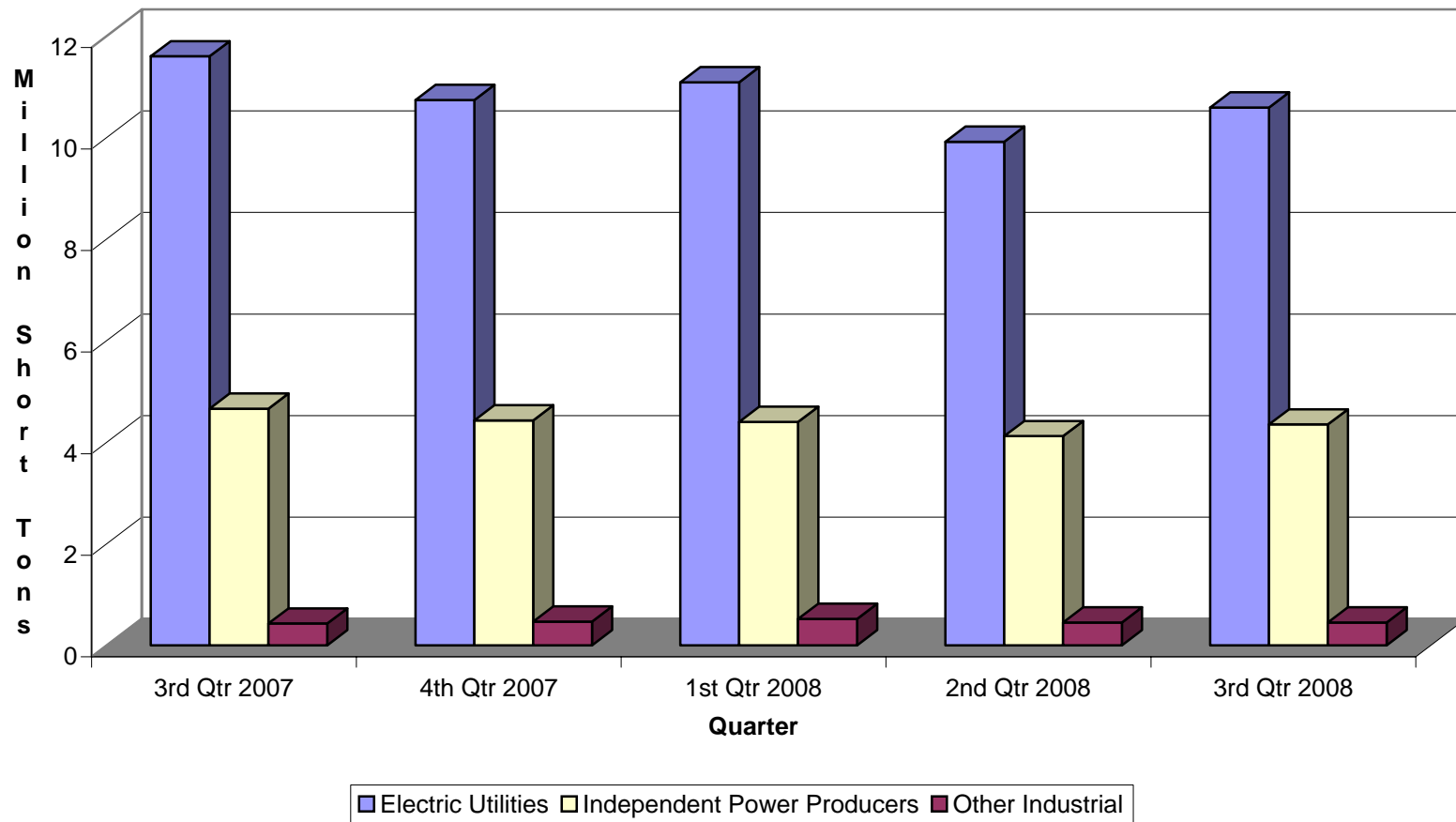


TABLE 9.
Production of Coal in Ohio
3rd Quarter 2008
(MILLION SHORT TONS)

| | COAL | |
|--|--------|-------|
| | 2008 | 2007 |
| 1st Quarter | 6.08 | 5.62 |
| 2nd Quarter | 6.64 | 5.00 |
| 3rd Quarter | 6.58 | 5.84 |
| 4th Quarter | | 5.96 |
| Total Year Through 3rd Quarter | 19.30 | 16.46 |
| Percent Change 3rd Quarter | 12.67% | |
| Percent Change Year Through 3rd Quarter | 17.25% | |

NOTE:

1. Preliminary data. Figures are reported as final on an annual basis.

Source: EIA Quarterly Coal Reports.

This page was intentionally left blank.

APPENDIX A

This page was intentionally left blank.

SOURCES OF DATA

| Table | Figure | Source |
|--------------|---------------|---|
| 1 | 1 | PUCO Form SE-1 - submitted by the investor-owned electric utility companies in Ohio to the PUCO. |
| 2 | 2 | PUCO Form SE-1 - submitted by the investor-owned electric utility companies in Ohio to the PUCO. |
| 3 | - | PUCO Form SE-1 - submitted by the investor-owned electric utility companies in Ohio to the PUCO. |
| 4 | 3 | PUCO Form SG-1 - submitted by the major investor-owned natural gas utility companies in Ohio to the PUCO. |
| 5 | 4 | PUCO Form SG-1 - submitted by the major investor-owned natural gas utility companies in Ohio to the PUCO. |
| 6 | - | USDOE Form EIA-782C - submitted by the Ohio petroleum companies to the USDOE and the PUCO. |
| 7 | 5 | USDOE Petroleum Marketing Monthly - USDOE publication on the internet. |
| 8 | 6 | EIA Quarterly Coal Reports - EIA publication on the internet. |
| | | Electric Power Monthly - EIA publication on the internet. |
| 9 | - | EIA Quarterly Coal Reports - EIA publication on the internet. |

This page was intentionally left blank.

APPENDIX B

Blank samples of the current versions of PUCO SE-1 and SG-1 Forms.

This page was intentionally left blank.

FORM SE-1: MONTHLY HISTORICAL ELECTRICITY DATA (Ohio Portion of EDU Service Area) ¹

COMPANY: _____
MONTH & YEAR: _____

PART A: ELECTRICITY SALES BY THE EDU TO ULTIMATE CUSTOMERS

| Customer Class | Sales (MWh) | Revenues (\$1000) | Number of Customers |
|---|-------------|-------------------|---------------------|
| 1 Residential | | | |
| 2 Commercial | | | |
| 3 Industrial Sales | | | |
| 4 Public Street & Highway Lighting | | | |
| 5 Other Sales to Public Authorities | | | |
| 6 Sales to Railroads & Railways | | | |
| 7 TOTAL SALES TO ULTIMATE CUSTOMERS (1) thru (6) | | | |

PART B: SALES FOR RESALE

| Customer Class | Sales (MWh) | Revenues (\$1000) | Number of Customers |
|--|-------------|-------------------|---------------------|
| 1 Cooperatively-Owned Electric Systems | | | |
| 2 Municipally Owned Electric Systems | | | |

PART C: ELECTRICITY DELIVERIES BY THE EDU FROM CRES PROVIDERS TO ULTIMATE CUSTOMERS

| Customer Class | Sales (MWh) | Revenues (\$1000) | Number of Customers |
|---|-------------|-------------------|---------------------|
| 1 Residential | | | |
| 2 Commercial | | | |
| 3 Industrial Sales | | | |
| 4 Public Street & Highway Lighting | | | |
| 5 Other Sales to Public Authorities | | | |
| 6 Sales to Railroads & Railways | | | |
| 7 TOTAL SALES TO ULTIMATE CUSTOMERS (1) thru (6) | | | |

PART D: DELIVERIES FOR RESALE

| Customer Class | Sales (MWh) | Revenues (\$1000) | Number of Customers |
|--|-------------|-------------------|---------------------|
| 1 Cooperatively-Owned Electric Systems | | | |
| 2 Municipally Owned Electric Systems | | | |

PART E: MONTHLY INTERNAL LOAD

| | |
|---------------------|--|
| 1 Monthly Peak (MW) | |
| 2 Day of the Week | |
| 3 Day of the Month | |
| 4 Hour | |

¹ Revised 07/03.

FORM SG-1: ACTUAL CONSUMPTION AND RELATED DATA ¹

COMPANY: _____
 MONTH & YEAR: _____
 HEATING DEGREE DAYS THIS MONTH: _____

| SALES TO ULTIMATE CUSTOMERS | | | |
|---|---------------|-------------------|---------------------|
| User Class | Volume (MMCF) | Revenues (\$1000) | Number of Customers |
| 1 Residential Sales | | | |
| 2 Commercial Sales | | | |
| 3 Industrial Sales | | | |
| 4 Sales to Electricity Generators | | | |
| 5 Other Sales to Public Authorities | | | |
| 6 Interdepartmental Sales | | | |
| 7 TOTAL SALES TO ULTIMATE CUSTOMERS (1) thru (6) | | | |

| SALES FOR RESALE | | | |
|--|---------------|-------------------|---------------------|
| | Volume (MMCF) | Revenues (\$1000) | Number of Customers |
| 8 Major LDC in Ohio | | | |
| 9 Small Gas Companies in Ohio | | | |
| 10 Municipals in Ohio | | | |
| 11 Other | | | |
| 12 TOTAL SALES FOR RESALE (8) thru (11) | | | |

| | | | |
|---|--|--|--|
| 13 Total Sales of Natural Gas (7) + (12) | | | |
| 14 Storage (Input) | | | |
| 15 Company Use | | | |
| 16 Losses and Unaccounted For | | | |
| 17 TOTAL DEMAND (13) THRU (16) | | | |

NUMBER OF INSTATE METERS: _____

| TRANSPORTATION OF GAS OF OTHERS | | | |
|---|---------------|-------------------|---------------------|
| Owner Class | Volume (MMCF) | Revenues (\$1000) | Number of Customers |
| 1 Jurisdictional Residential Customers | | | |
| 2 Jurisdictional Commercial Customers | | | |
| 3 Jurisdictional Industrial Customers | | | |
| 4 Jurisdictional Electricity Generators | | | |
| 5 Other Jurisdictional Customers | | | |

| PUCO CURTAILMENT PRIORITY CLASSES | | |
|--|------------------------|------------------------|
| PUCO CLASSES | Base Allocation (MMCF) | Curtailment Percentage |
| | | |

¹ Revised 07/03.

This page was intentionally left blank.

